

# OKLAHOMA ARKANSAS VALLEY ECOREGION



## G1 and G2 Species Habitat Management Guidelines

### INTRODUCTION

The Sustainable Forestry Initiative® (SFI) [2022 Standards](#) include requirements that promote and conserve Forests with Exceptional Conservation Value (FECV), which includes critically imperiled (G1) and imperiled (G2) species. This fact sheet summarizes the analysis of FECV habitat within this ecoregion and provides habitat management recommendations that would benefit species potentially found here.

### HABITAT TYPES

- Hardwood Forest
- Mixed Conifer Forest
- Riparian/Stream/Special Site
- Pine Plantation

### HARDWOOD FOREST MANAGEMENT

- Protect known locations of G1/G2 Species
- Retain large diameter trees, stumps and logs

### MIXED CONIFER FOREST MANAGEMENT

- Protect known locations of G1/G2 Species
- Retain legacy trees, stumps, and logs
- Retain large diameter trees with cavities or broken tops
- Leave skips or thin to create gaps
- Retain large slash into piles
- Buffer rocky outcropping and scree areas

### RIPARIAN/STREAM/SPECIAL SITE MANAGEMENT

- Protect known locations of G1/G2 Species
- Protect known location of Blue River Orangebelly Darter - endemic to the Blue River drainage of southern Oklahoma
- Maintain well vegetated riparian buffers
- Retain large diameter trees near streams and rivers
- Buffer streams, wetlands, springs, and headwater areas

### PINE PLANTATION MANAGEMENT

- Protect known locations of G1/G2 Species
- Retain a variety of species including hardwoods
- Leave woody debris from logging on the ground or pile into wildlife habitat piles
- Consider thinning to create gaps for shrub growth



**Sequoyah Slimy Salamander**



**Indiana Myotis**



**Ouachita Rock Pocketbook**

*All management recommendations assume that operators and land managers are following all applicable BMPs, laws, and regulations.*

# OKLAHOMA ARKANSAS VALLEY ECOREGION

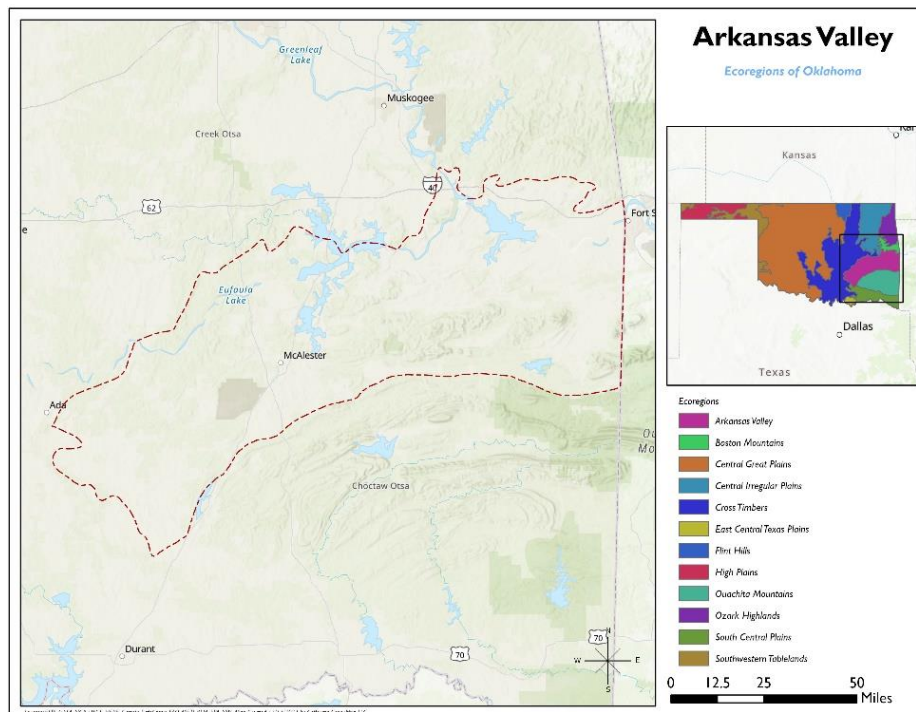


## G1 and G2 Species Habitat Management Guidelines

SCIENTIFIC NAME	COMMON NAME	HABITAT	STATUS
<i>Plethodon kiamichi</i>	<a href="#">Kiamichi Slimy Salamander</a>	Hardwood Forest	G2
<i>Myotis septentrionalis</i>	<a href="#">Northern Long-eared Bat</a>	Hardwood Forest	G2G3
<i>Myotis sodalite</i>	<a href="#">Indiana Myotis</a>	Mixed Conifer Forest	G2
<i>Stenotrema pilsbryi</i>	<a href="#">Rich Mountain Slitmouth</a>	Mixed Conifer Forest	G2
<i>Streptanthus squamiformis</i>	<a href="#">Pine-oak Jewelflower</a>	Mixed Conifer Forest	G2G3
<i>Calopogon oklahomensis</i>	<a href="#">Oklahoma Grass-pink</a>	Pine Plantation**	G2
<i>Etheostoma cyanorum</i>	<a href="#">Blue River Orangebelly Darter</a>	Special Site	G1
<i>Arcidens wheeleri</i>	<a href="#">Ouachita Rock Pocketbook</a>	Stream	G1
<i>Quadrula fragosa</i>	<a href="#">Winged Mapleleaf</a>	Stream	G1
<i>Potamilus leptodon</i>	<a href="#">Scaleshell</a>	Stream	G1G2
<i>Notropis Girardi</i>	<a href="#">Arkansas River Shiner</a>	Stream	G2
<i>Sagittaria ambigua</i>	<a href="#">Kansas Arrowhead</a>	Stream	G2
<i>Faxonius saxatilis</i>	<a href="#">Kiamichi Crayfish</a>	Stream	G2
<i>Percina pantherina</i>	<a href="#">Leopard Darter</a>	Stream	G2
<i>Dubiraphia parva</i>	<a href="#">Little Dubiraphian Riffle Beetle</a>	Stream	G2
<i>Noturus placidus</i>	<a href="#">Neosho Madtom</a>	Stream	G2
<i>Alosa alabamae</i>	<a href="#">Alabama Shad</a>	Stream	G2G3
<i>Calamovilfa arcuata</i>	<a href="#">Rivergrass</a>	Stream	G2G3

\*Species links provided when available

\*\*Found rarely, but in a variety of habitat types including pine savannas, coastal prairies, open oak woodlands



All management recommendations assume that operators and land managers are following all applicable BMPs, laws, and regulations.