

OKLAHOMA

CENTRAL GREAT PLAINS Ecoregion

G1 and G2 Species Habitat Management Guidelines



INTRODUCTION

The Sustainable Forestry Initiative® (SFI) [2022 Standards](#) include requirements that promote and conserve Forests with Exceptional Conservation Value (FECV), which includes critically imperiled (G1) and imperiled (G2) species. This fact sheet summarizes the analysis of FECV habitat within this ecoregion and provides habitat management recommendations that would benefit species potentially found here.

HABITAT TYPES

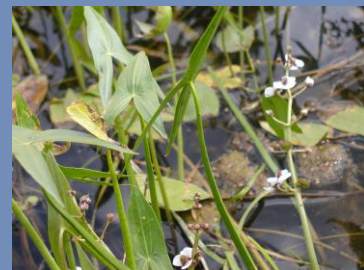
- Stream
- Special Site

STREAM/SPECIAL SITE MANAGEMENT

- Protect known locations of G1/G2 Species
- Protect known location of Blue River Orangebelly Darter - endemic to the Blue River drainage of southern Oklahoma
- Maintain well vegetated riparian buffers
- Retain large diameter trees near streams and rivers
- Buffer streams, wetlands, springs, and headwater areas



Blue River Orangebelly Darter



Kansas Arrowhead



Rivergrass

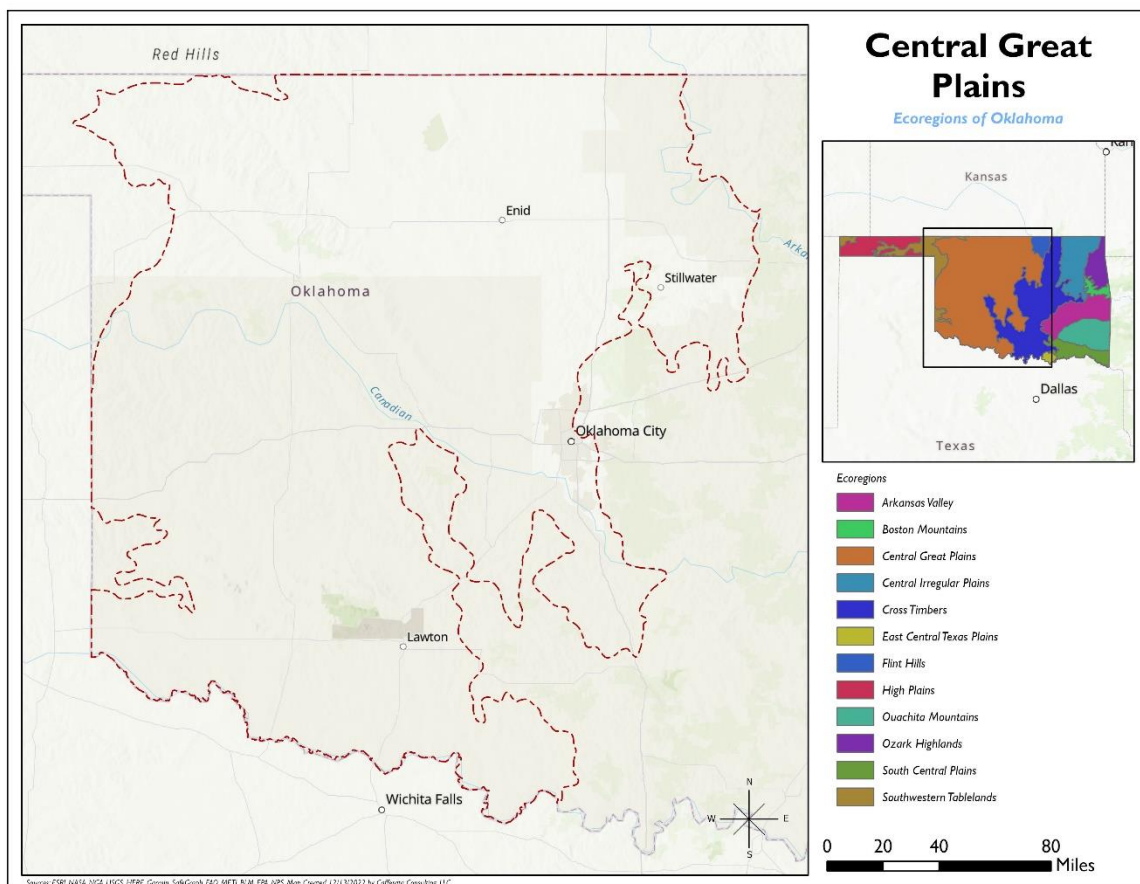
All management recommendations assume that operators and land managers are following all applicable BMPs, laws, and regulations.

OKLAHOMA CENTRAL GREAT PLAINS ECOREGION G1 and G2 Species Habitat Management Guidelines



SCIENTIFIC NAME	COMMON NAME	HABITAT	STATUS
<i>Etheostoma cyanorum</i>	Blue River Orangebelly Darter	Special Site	G1
<i>Sagittaria ambigua</i>	Kansas Arrowhead	Stream	G2
<i>Calamovilfa arcuata</i>	Rivergrass	Stream	G2G3

*Species links provided when available



All management recommendations assume that operators and land managers are following all applicable BMPs, laws, and regulations.