

OKLAHOMA EAST CENTRAL TEXAS PLAINS ECOREGION

G1 and G2 Species Habitat Management Guidelines



INTRODUCTION

The Sustainable Forestry Initiative® (SFI) [2022 Standards](#) include requirements that promote and conserve Forests with Exceptional Conservation Value (FECV), which includes critically imperiled (G1) and imperiled (G2) species. This fact sheet summarizes the analysis of FECV habitat within this ecoregion and provides habitat management recommendations that would benefit species potentially found here.

HABITAT TYPES

- Hardwood Forest
- Pine Plantation
- Special Site

HARDWOOD FOREST MANAGEMENT

- Protect known locations of G1/G2 species
- Retain large diameter trees, stumps and logs

PINE PLANTATION MANAGEMENT

- Protect known locations of G1/G2 Species
- Retain a variety of species including hardwoods
- Leave woody debris from logging on the ground or pile into wildlife habitat piles
- Consider thinning to create gaps for shrub growth

SPECIAL SITE MANAGEMENT

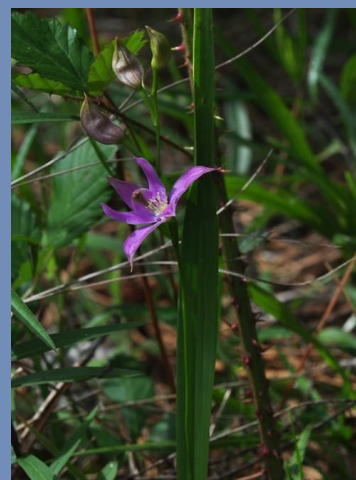
- Protect known location (this species is endemic to the Blue River drainage of southern Oklahoma)
- Maintain well vegetated riparian buffers
- Retain large diameter trees near streams and rivers
- Buffer streams, wetlands, springs, and headwater areas



Arkansas Meadowrue



Blue River Orangebelly Darter



Oklahoma Grass-pink

All management recommendations assume that operators and land managers are following all applicable BMPs, laws, and regulations.

OKLAHOMA EAST CENTRAL TEXAS PLAINS ECOREGION

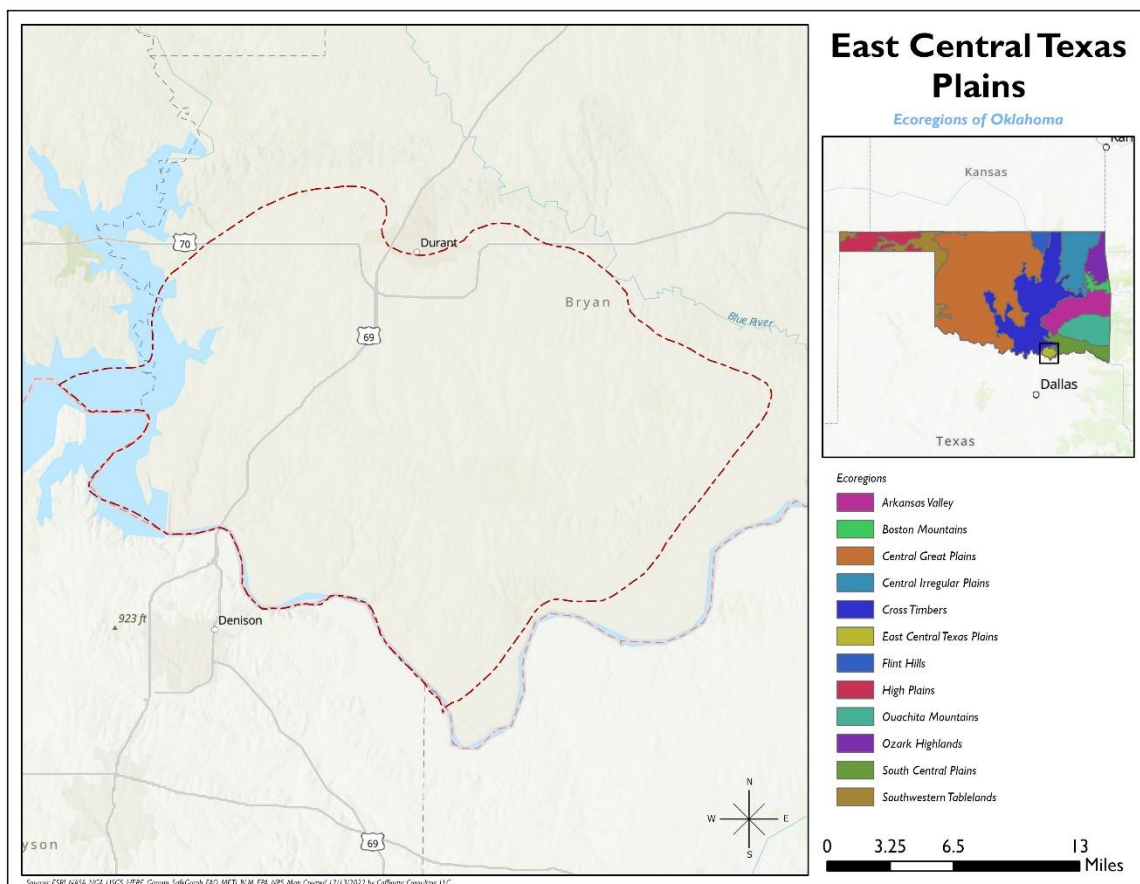
G1 and G2 Species Habitat Management Guidelines



SCIENTIFIC NAME	COMMON NAME	HABITAT	STATUS
<i>Thalictrum arkansanum</i>	Arkansas Meadowrue	Hardwood Forest	G2
<i>Calopogon oklahomensis</i>	Oklahoma Grass-pink	Pine plantation**	G2
<i>Etheostoma cyanorum</i>	Blue River Orangebelly Darter	Special Site	G1

*Species links provided when available

**Found rarely, but in a variety of habitat types including pine savannas, coastal prairies, open oak woodlands



All management recommendations assume that operators and land managers are following all applicable BMPs, laws, and regulations.