

# ARKANSAS

## MISSISSIPPI ALLUVIAL PLAIN ECOREGION

### G1 and G2 Species Habitat Management Guidelines



## INTRODUCTION

The Sustainable Forestry Initiative® (SFI) [2022 Standards](#) include requirements that promote and conserve Forests with Exceptional Conservation Value (FECV), which includes critically imperiled (G1) and imperiled (G2) species. This fact sheet summarizes the analysis of FECV habitat within this ecoregion and provides habitat management recommendations that would benefit species potentially found here.

## HABITAT TYPES

- Hardwood Forest
- Mixed Conifer Forest
- Riparian/Stream/Special Site
- Pine Plantation

## HARDWOOD FOREST MANAGEMENT

- Protect known locations of G1/G2 Species
- Retain large diameter trees, stumps and logs

## MIXED CONIFER FOREST MANAGEMENT

- Protect known locations of G1/G2 Species
- Retain legacy trees, stumps, and logs
- Retain large diameter trees with cavities or broken tops
- Leave skips or thin to create gaps
- Retain large slash into piles
- Buffer rocky outcropping and scree areas
- Maintain violet for the Diana Fritillary

## RIPARIAN/STREAM/SPECIAL SITE MANAGEMENT

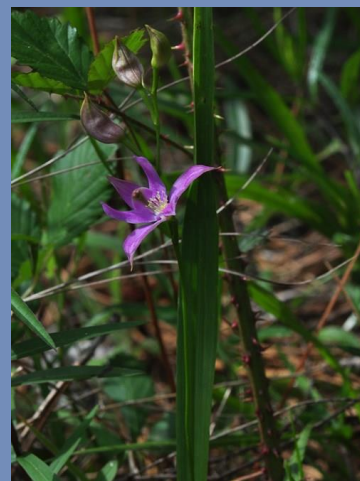
- Protect known locations of G1/G2 Species
- Maintain well vegetated riparian buffers
- Retain large diameter trees near streams and rivers
- Buffer streams, wetlands, springs, and headwater areas

## PINE PLANTATION FOREST MANAGEMENT

- Protect known locations of G1/G2 Species
- Retain a variety of species including hardwoods
- Leave woody debris from logging on the ground or pile into wildlife habitat piles
- Consider thinning to create gaps for shrub growth



**Indiana Myotis**



**Oklahoma Grass-pink**



**Winged Mapleleaf**

*All management recommendations assume that operators and land managers are following all applicable BMPs, laws, and regulations.*

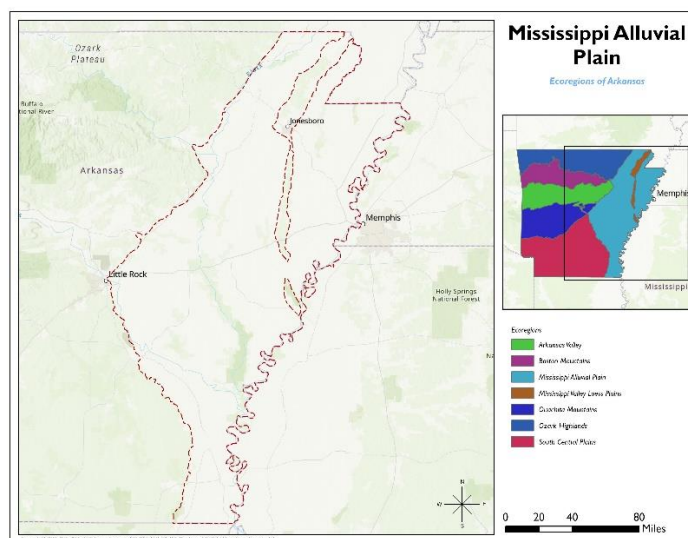
# ARKANSAS MISSISSIPPI ALLUVIAL PLAIN ECOREGION G1 and G2 Species Habitat Management Guidelines



| SCIENTIFIC NAME                   | COMMON NAME                               | HABITAT                    | STATUS |
|-----------------------------------|---|----------------------------|--------|
| <i>Thalictrum arkansanum</i>      | <a href="#">Arkansas Meadowrue</a>        | Hardwood Forest            | G2     |
| <i>Myotis septentrionalis</i>     | <a href="#">Northern Long-eared Bat</a>   | Hardwood Forest            | G2G3   |
| <i>Myotis sodalis</i>             | <a href="#">Indiana Myotis</a>            | Mixed Conifer Forest       | G2     |
| <i>Xolotrema occidentale</i>      | <a href="#">Arkansas Wedge</a>            | Mixed Conifer Forest (est) | G1     |
| <i>Calopogon oklahomensis</i>     | <a href="#">Oklahoma Grass-pink</a>       | Pine Plantation**          | G2     |
| <i>Argynnis diana</i>             | <a href="#">Diana Fritillary</a>          | Riparian                   | G2G3   |
| <i>Mespilus canescens</i>         | <a href="#">Stern's Medlar</a>            | Special Site               | G1     |
| <i>Daedalochila peregrina</i>     | <a href="#">White Liptooth</a>            | Special Site               | G2     |
| <i>Paraleptophlebia calcarica</i> | <a href="#">a prongill mayfly</a>         | Stream                     | G1     |
| <i>Faxonius eupunctus</i>         | <a href="#">Coldwater Crayfish</a>        | Stream                     | G1     |
| <i>Epioblasma curtisii</i>        | <a href="#">Curtis Pearlymussel</a>       | Stream                     | G1     |
| <i>Marstonia ozarkensis</i>       | <a href="#">Ozark Pyrg</a>                | Stream                     | G1     |
| <i>Quadrula fragosa</i>           | <a href="#">Winged Mapleleaf</a>          | Stream                     | G1     |
| <i>Pleurobema riddellii</i>       | <a href="#">Louisiana Pigtoe</a>          | Stream                     | G1G2   |
| <i>Lampsilis abrupta</i>          | <a href="#">Pink Mucket</a>               | Stream                     | G1G2   |
| <i>Potamilus leptodon</i>         | <a href="#">Scaleshell</a>                | Stream                     | G1G2   |
| <i>Caecidotea dimorpha</i>        | <a href="#">a cave obligate isopod</a>    | Stream                     | G2     |
| <i>Potamilus capax</i>            | <a href="#">Fat Pocketbook</a>            | Stream                     | G2     |
| <i>Creaserinus gilpini</i>        | <a href="#">Jefferson County Crayfish</a> | Stream                     | G2     |
| <i>Faxonius marchandi</i>         | <a href="#">Mammoth Spring Crayfish</a>   | Stream                     | G2     |
| <i>Scaphirhynchus albus</i>       | <a href="#">Pallid Sturgeon</a>           | Stream                     | G2     |
| <i>Pleurobema rubrum</i>          | <a href="#">Pyramid Pigtoe</a>            | Stream                     | G2G3   |
| <i>Cyprogenia aberti</i>          | <a href="#">Western Fanshell</a>          | Stream                     | G2G3   |

\*Species links provided when available

\*\*Found rarely, but in a variety of habitat types including pine savannas, coastal prairies, open oak woodlands



All management recommendations assume that operators and land managers are following all applicable BMPs, laws, and regulations.